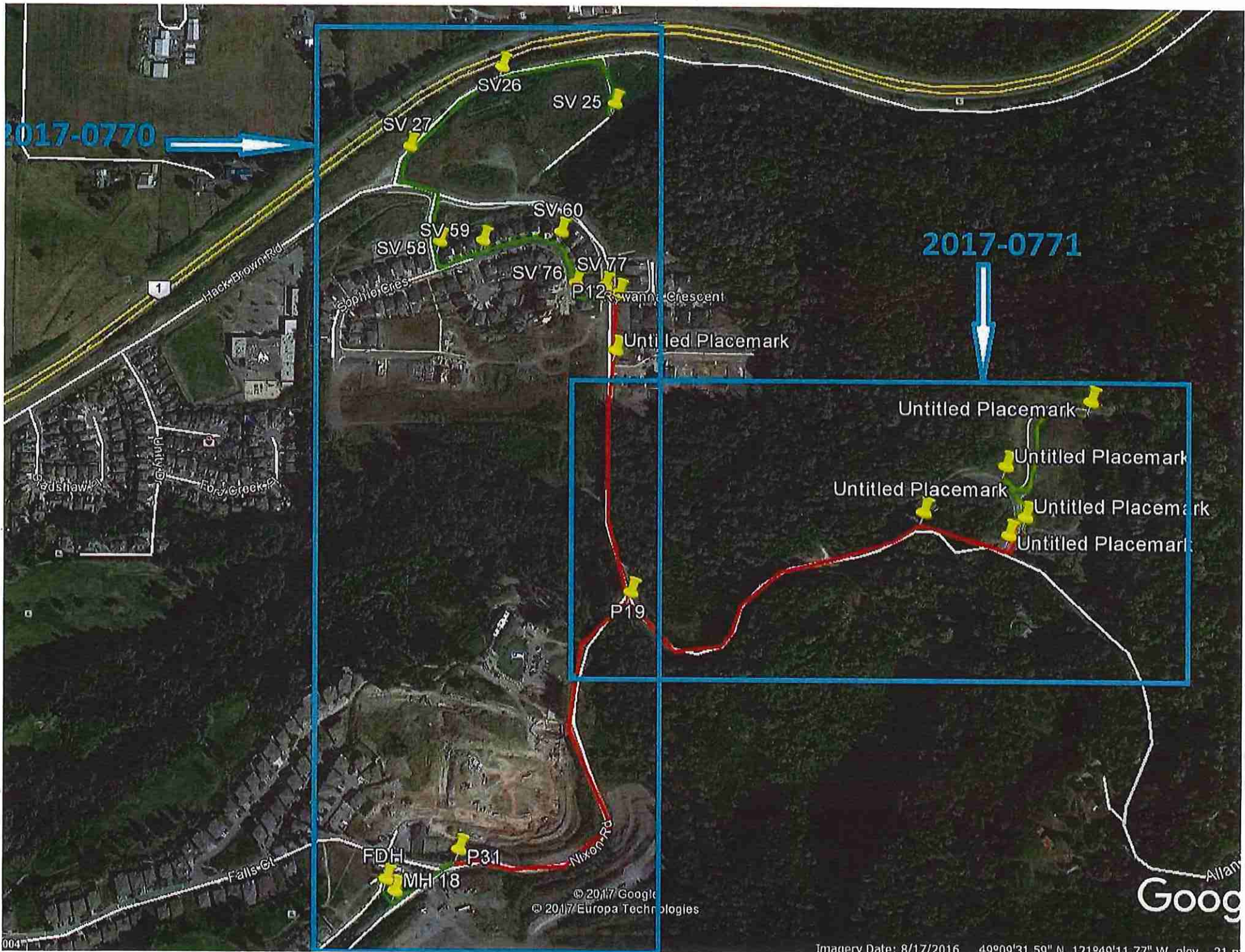


2017-0770



2017-0771



© 2017 Google  
© 2017 Europa Technologies

Goog

Imagery Date: 8/17/2016 49°09'31.59" N 121°49'11.77" W elev 21 m

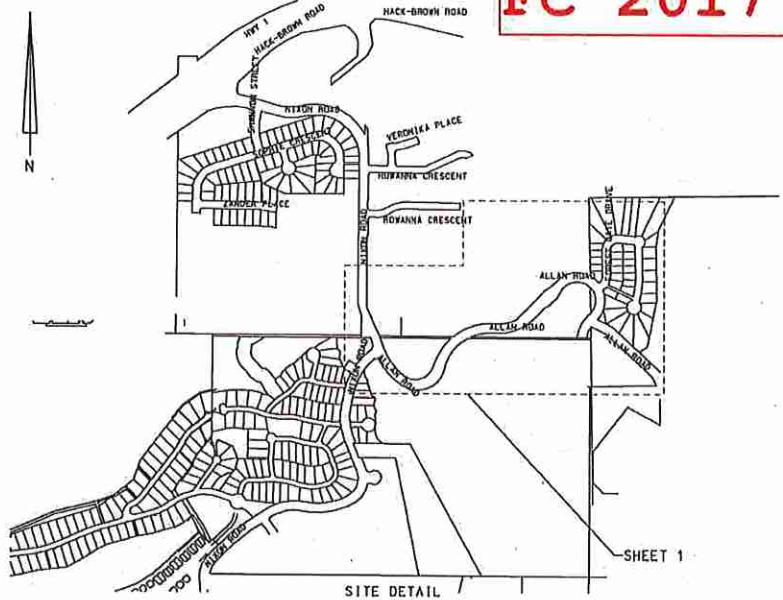
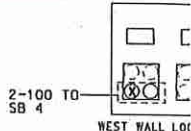


**FC 2017 - 0771**

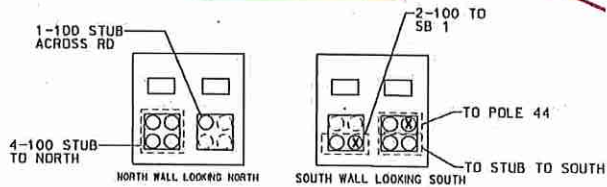
**FNGM**

15 - YELLOW  
14 - BLACK  
**WARNING**  
TELUS FIBRE OPTIC  
96F SM PSP STR LT2 RD  
RSDL 3042A  
NW# 2640354

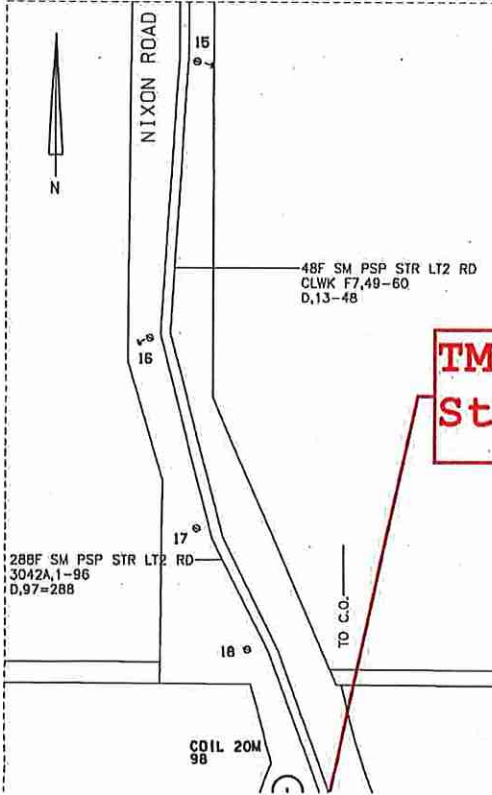
12 - YELLOW  
**WARNING**  
TELUS FIBRE OPTIC  
MPT TAIL  
RSDL 3042A  
NW# 2640354



**TMP Finish**

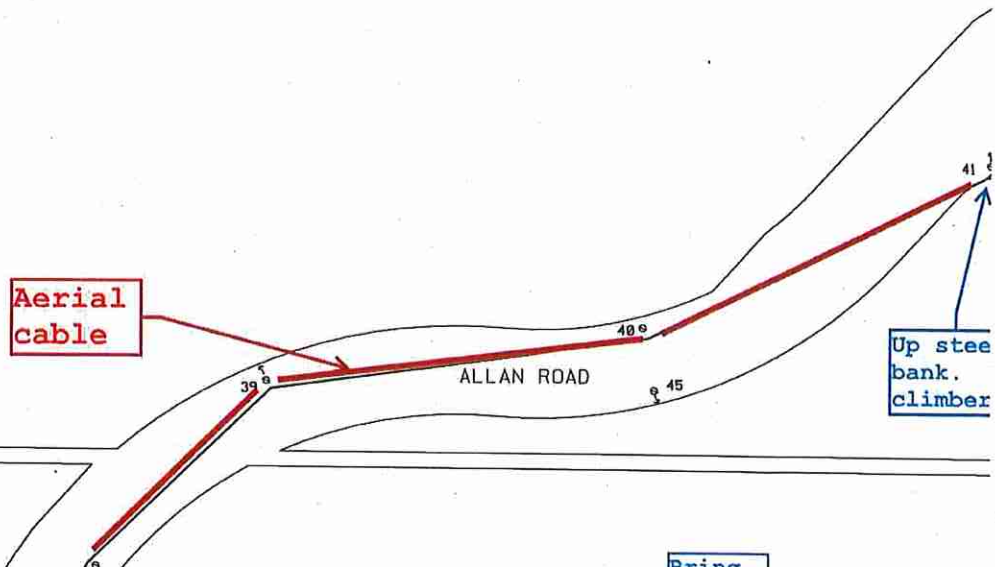


**SV 56 DETAIL**  
25m x 15m (82ft x 49ft)



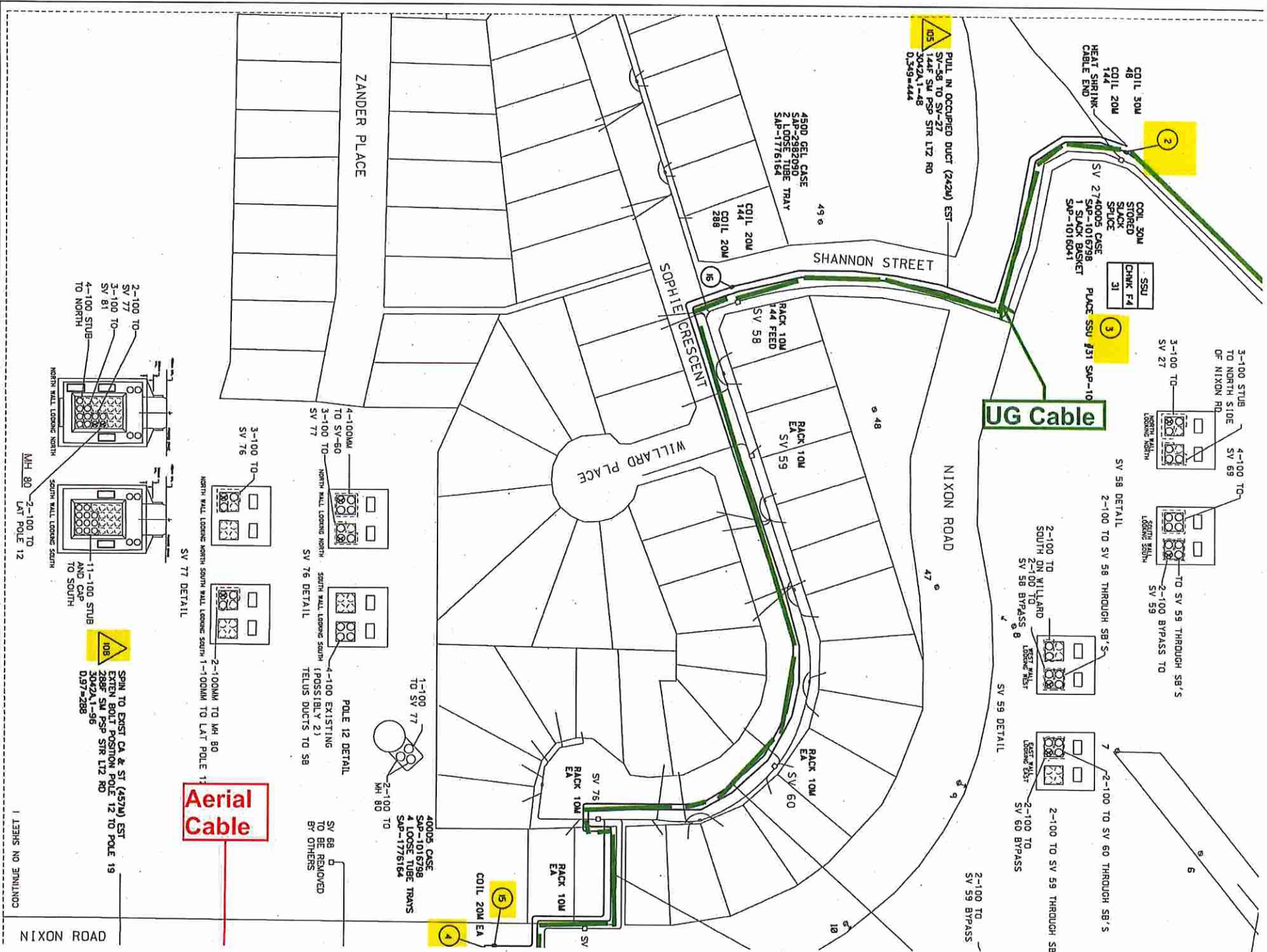
**TMP Start**

**Aerial cable**









**UG Cable**

**Aerial Cable**

105  
PULL IN OCCUPIED DUCT (242M) EST  
SV-58 TO SV-27  
144F SM PSP STR LTZ RD  
3042A1-48  
0.359-444

COIL 30M  
48  
COIL 20M  
144  
HEAT SHRINK-  
CABLE END

COIL 30M  
STORED  
CHUNK F4  
SLACK  
PLACE SSU #31 SUP-10  
SV 2740005 CASE  
SAP-1016798  
1 SLACK BASKET  
SAP-1016841

SSU  
CHUNK F4  
31

3-100 STUB  
TO NORTH SIDE  
OF NIXON RD  
SV 27  
4-100 TO  
SV 69

TO SV 59 THROUGH SB'S  
SV 59

2-100 TO SV 58 THROUGH SB'S  
SV 58

2-100 TO SV 60 THROUGH SB'S  
SV 60

2-100 TO SV 59 THROUGH SB  
SV 59

2-100 TO SV 59 BYPASS  
SV 59

SHANNON STREET

SOPHIE CRESCENT

WILLARD PLACE

ZANDER PLACE

NIXON ROAD

COIL 20M EA

40005 CASE  
SAP-1016798  
4 LOOSE TUBE TRAYS  
SAP-1776164

SV 68  
TO BE REMOVED  
BY OTHERS

POLE 12 DETAIL  
4-100 EXISTING  
(POSSIBLY 21)  
TELUS DUCTS TO SB

SV 76 DETAIL  
NORTH WALL LOOKING NORTH  
SOUTH WALL LOOKING SOUTH

SV 77 DETAIL  
NORTH WALL LOOKING NORTH  
SOUTH WALL LOOKING SOUTH

SV 76  
3-100 TO

SV 77 DETAIL  
NORTH WALL LOOKING NORTH  
SOUTH WALL LOOKING SOUTH

SV 77 DETAIL  
NORTH WALL LOOKING NORTH  
SOUTH WALL LOOKING SOUTH

2-100 TO  
SV 77  
3-100 TO  
SV 81  
4-100 STUB  
TO NORTH

SV 77 DETAIL  
NORTH WALL LOOKING NORTH  
SOUTH WALL LOOKING SOUTH

SV 77 DETAIL  
NORTH WALL LOOKING NORTH  
SOUTH WALL LOOKING SOUTH

SV 77 DETAIL  
NORTH WALL LOOKING NORTH  
SOUTH WALL LOOKING SOUTH

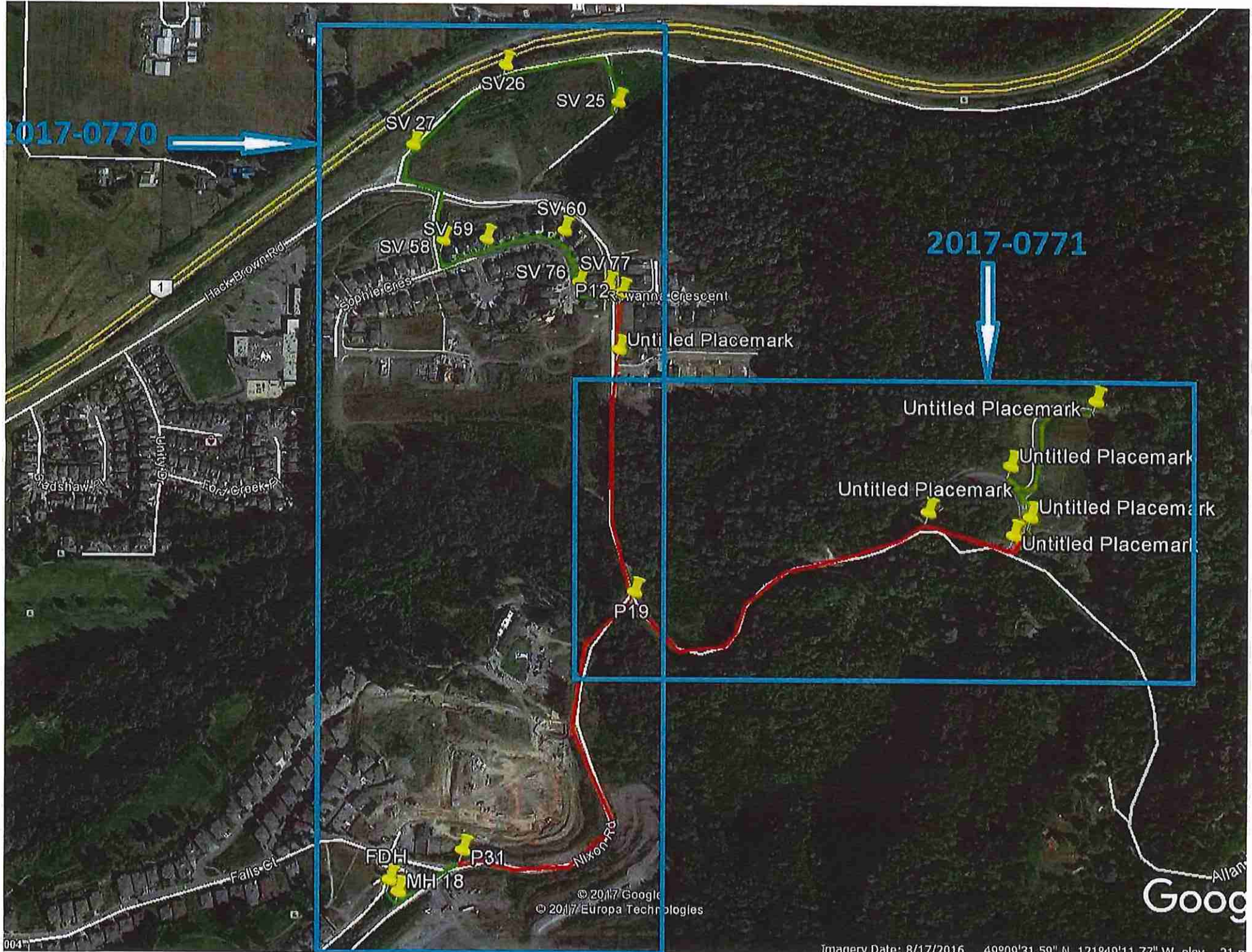
SV 77 DETAIL  
NORTH WALL LOOKING NORTH  
SOUTH WALL LOOKING SOUTH

SV 77 DETAIL  
NORTH WALL LOOKING NORTH  
SOUTH WALL LOOKING SOUTH

SV 77 DETAIL  
NORTH WALL LOOKING NORTH  
SOUTH WALL LOOKING SOUTH

108  
SPIN TO EXIST CA & ST (452M) EST  
EXTEN BOLT POSITION POLE 12 TO POLE 19  
288F SM PSP STR LTZ RD  
3042A1-96  
0.97-288





2017-0770



2017-0771



SV 26

SV 25

SV 27

SV 60

SV 59

SV 58

SV 76

SV 77

P12

Untitled Placemark

Untitled Placemark

Untitled Placemark

Untitled Placemark

Untitled Placemark

Untitled Placemark

P19

FDH

P31

MH 18

© 2017 Google  
© 2017 Europa Technologies

Goog



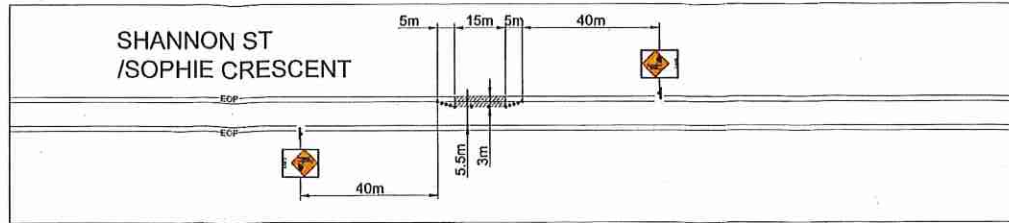
TABLE A - TAPER LENGTHS		Regulatory Speed Limit before Work Begins (km/h)									
Taper Types (m)		≤ 50	60	70	80	90	100	110	120		
Merge Taper Length	1/4	35	55	160	190	210	230	250	280		
Lane Shift Taper Length	1/4	30	50	80	100	110	120	130	140		
Downstream Taper Length	1/4	30	30	30	30	30	30	30	30		
TCP, Signal, and Shoulder Taper Length (min. 5 devices)	1/4	5	8	15	15	15	15	15	15		
Minimum Tangent Length between Tapers	1/4	30	60	160	190	210	230	250	280		
Run-in Length on Centreline	1/4	40	50	60	60	70	80	90	100		

TABLE B - DEVICE SPACING LENGTHS		Regulatory Speed Limit before Work Begins (km/h)									
Device Spacing (m)		≤ 50	60	70	80	90	100	110	120		
Construction Sign Spacing	A	40	60	80	100	150	150	200	200		
Buffer Space	B	30	40	60	60	110	140	170	200		
Channelizing Device Spacing for Tapers	C	10	10	15	15	15	15	15	15		
Channelizing Device Spacing on Curves and Tangents	D	10	10	30	30	40	40	40	50		

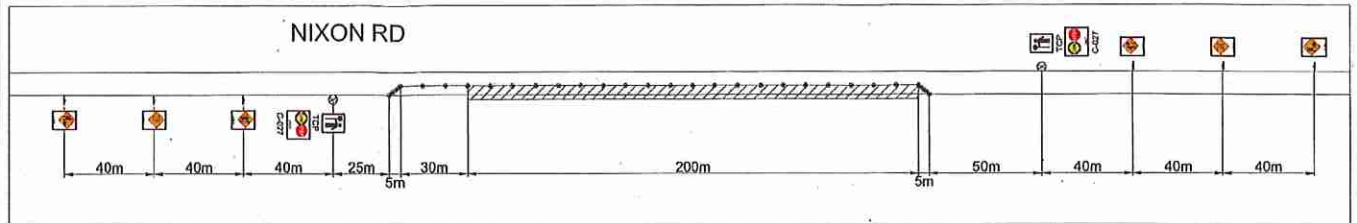
LEGEND			
	Flexible Drum		Paint Truck
	Tubular Marker		Escort Truck
	Cone		Chaser Vehicle
	Sign		Vehicle Mounted Rear Crash Attenuator
	Traffic Control Person		360° Flashing Light
	Work Activity Area		Portable Traffic Signal
	Work Truck		Barricade and Fencing
	Shadow Vehicle		Flashing Arrow Board (FAB)
	Shadow Vehicle #1		Flashing Arrow Board (FAB) in caution mode
	Shadow Vehicle #2		Dynamic Message Sign (DMS)
	Buffer Vehicle		

**CONTACT INFORMATION:**

ALEC LUNDE:  
C: 778-837-4642



INSET "A"  
TYPICAL PARKING LANE LAYOUT (50Km/h ROAD)



INSET "B"  
TYPICAL SINGLE LANE ALTERNATING LAYOUT (50Km/h ROAD)



BC ONE CALL

CALL BEFORE YOU DIG  
1-800-474-6288  
VANCOUVER AREA  
604-257-1849

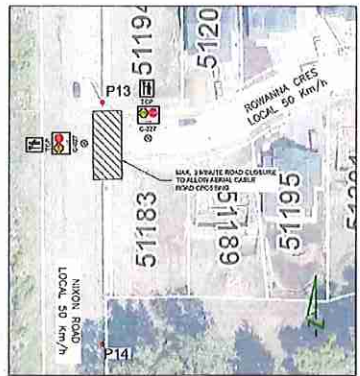


CONSTRUCTION	PERMIT	DESIGNER	CR-DATE	THIS WORK PROVIDED ON THIS DRAWING IS ALL THAT EMPHASIS THE PROPERTY OF TELUS
REV. DESCRIPTION	SUBMITTED DATE	DATE: 03/11/12	SCALE: 1/8"	
REV. DESCRIPTION	REV. DATE		DATE: 03/17	
REV. DESCRIPTION	REV. DATE		ASSOCIATED DRAWINGS	
REV. DESCRIPTION	DATE:	A.		SYSTEM NAME:
REV. DESCRIPTION	75% CONSTRUCTED DATE:	B.		2634859
REV. DESCRIPTION	CONTRACTOR:	TELUS		SHEET 4

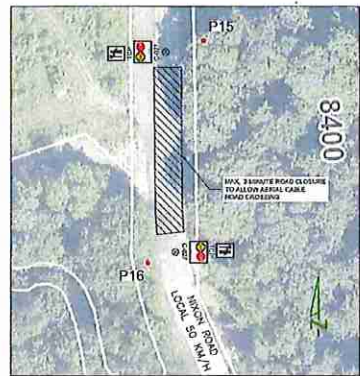
TABLE A - TAPER LENGTHS										
Taper Types (m)	Regulatory Speed Limit before Work Begins (km/h)									
	50	60	70	80	90	100	110	120	130	140
Merge Taper Length	4	35	55	160	190	210	230	250	280	
Lane Shift Taper Length	4	30	50	80	100	110	120	130	140	
Downstream Taper Length	4	30	30	30	30	30	30	30	30	
TCS, Signal, and Shoulder Taper Length (min. 5 devices)	4	5	8	15	15	15	15	15	15	
Minimum Tangent Length between Tapers	4	30	60	160	190	210	230	250	280	
Run-in Length on Centerline	4	40	50	60	70	80	90	100		

TABLE B - DEVICE SPACING LENGTHS										
Device Spacing (m)	Regulatory Speed Limit before Work Begins (km/h)									
	50	60	70	80	90	100	110	120	130	140
Construction Sign Spacing	A	40	60	80	100	150	150	200	200	
Buffer Space	B	30	40	60	80	110	160	170	200	
Channelizing Device Spacing for Tapers	C	10	10	15	15	15	15	15	15	
Channelizing Device Spacing on Curves and Tangents	D	10	10	30	30	40	40	40	50	

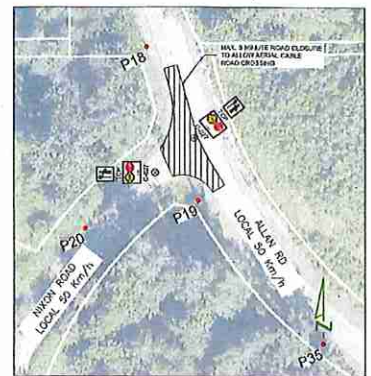
LEGEND		
○	Flexible Drum	Paint Truck
⊙	Tubular Marker	Escort Truck
•	Cone	Chaser Vehicle
⊠	Sign	Vehicle Mounted Rear Crash Attenuator
⊠	Traffic Control Person	360° Flashing Light
⊠	Work Activity Area	Portable Traffic Signal
⊠	Work Truck	Barricade and Fencing
⊠	Shadow Vehicle	Flashing Arrow Board (FAB)
⊠	Shadow Vehicle #1	Flashing Arrow Board (FAB) in caution mode
⊠	Shadow Vehicle #2	Dynamic Message Sign (DMS)
⊠	Buffer Vehicle	



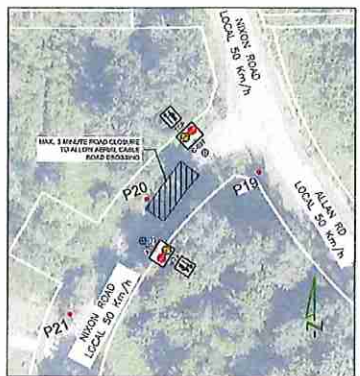
INTERSECTION AT  
NIXON RD & ROWANNA CRES



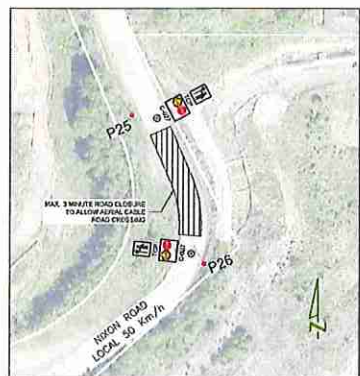
NIXON RD  
BETWEEN P15 & P16



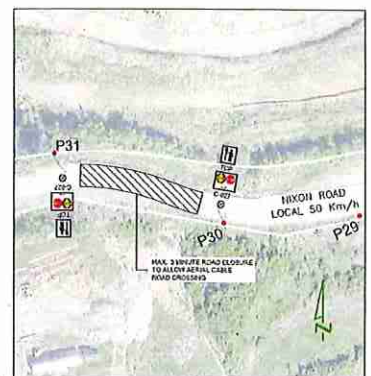
INTERSECTION AT  
NIXON RD & ALLAN RD



NIXON RD  
BETWEEN P19 & P20



NIXON RD  
BETWEEN P25 & P26



NIXON RD  
BETWEEN P29 & P31

CONTACT INFORMATION:  
ALEC LUNDE:  
C: 778-837-4642



BC ONE CALL  
CALL BEFORE YOU DIG  
1 800-474-8333  
VANCOUVER AREA  
604.237.1500



CONTRACTOR	ISSUED
REV. DESCRIPTION	SUBMITTED DATE
REV. DESCRIPTION	REVISED DATE
REV. DESCRIPTION	APPROVED DATE
REV. DESCRIPTION	DATE
REV. DESCRIPTION	FAS COMPLETED DATE
REV. DESCRIPTION	CONTRACTOR

DISC. 2	DISC. 3
REV. DESCRIPTION	DATE
REV. DESCRIPTION	DATE
REV. DESCRIPTION	DATE
REV. DESCRIPTION	DATE

THE WORK PROVIDED ON THIS DRAWING IS THE PROPERTY OF TELUS  
LAYOUTS FOR AERIAL CABLE ROAD CROSSINGS

ALONG NIXON ROAD IN CHILLIWACK

SYSTEM NUMBER: 28107556  
SHEET 5



TABLE A - TAPER LENGTHS									
Taper Types (m)	Regulatory Speed Limit before Work Begins (km/h)								
	≤ 50	60	70	80	90	100	110	120	
Merge Taper Length	1/4	35	55	160	190	210	230	250	280
Lane Shift Taper Length	1/4	30	50	80	100	110	120	130	140
Downstream Taper Length	1/4	30	30	30	30	30	30	30	30
TCR, Signal, and Shoulder Taper Length (min. 5 devices)	1/4	5	8	15	15	15	15	15	15
Minimum Tangent Length between Tapers	1/4	30	60	160	190	210	230	250	280
Run-in Length on Centreline	1/4	40	50	60	60	70	80	80	100

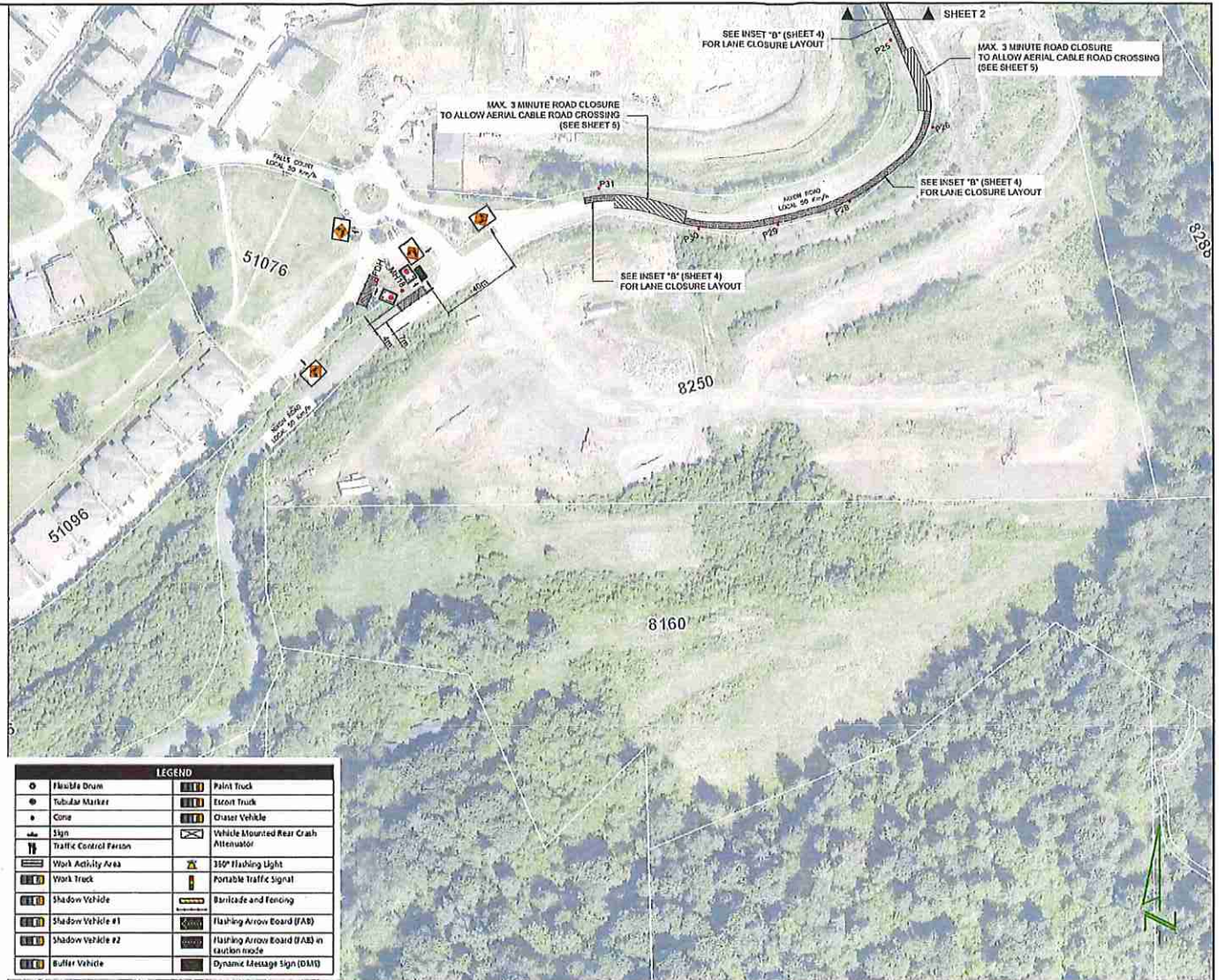
TABLE B - DEVICE SPACING LENGTHS									
Device Spacing (m)	Regulatory Speed Limit before Work Begins (km/h)								
	≤ 50	60	70	80	90	100	110	120	
Construction Sign Spacing	A	40	60	80	100	150	150	200	200
Buffer Space	B	30	40	60	80	110	140	170	200
Channelizing Device Spacing for Tapers	C	10	10	15	15	15	15	15	15
Channelizing Device Spacing on Curves and Tangents	D	10	10	30	30	40	40	40	50

**NOTES:**

1. THE WORK REQUIRING THE TRAFFIC CONTROL MEASURE INVOLVES THE PLACING AND SPLICING OF FIBER OPTIC CABLE AT P25, P26, P28, P29, P30, P31, MH18, AND FDH LOCATED ON THE SIDE OF NIXON ROAD AND FALLS COURT IN CHILLIWACK. THE DURATION OF USE OF THIS MEASURE WILL BE UNTIL THE WORK IS COMPLETED.
2. LANE CLOSURES ARE AS NOTED IN THIS LAYOUT.
3. TIMING OF THE WORKS WILL BE FROM 9:00AM TO 3:00 PM.
4. LOCATION OF THE WORK ZONE IS AS INDICATED ON THIS PLAN FOR CONSTRUCTION.
5. THE MEASURES SHOWN IN THIS TRAFFIC MANAGEMENT PLAN IS IN ACCORDANCE TO THE "BC TRAFFIC MANAGEMENT MANUAL FOR WORK ON ROADWAYS (2015 INTERIM)". CHANGES TO THIS LAYOUT MAY BE MADE BY THE TRAFFIC CONTROL PERSON IN CHARGE TO REFLECT FIELD CONDITIONS.
6. TEMPORARY ROAD CLOSURE FOR MAXIMUM 3 MINUTES REFER TO FIGURES ON SHEET 5.
7. PRIORITY ACCESS WILL BE GIVEN TO EMERGENCY VEHICLES.
8. ALL DIMENSIONS ARE IN METRES.

**CONTACT INFORMATION:**

ALEC LUNDE:  
C: 778-837-4642



LEGEND	
○ Flexible Drum	Paint Truck
● Tubular Marker	Escort Truck
▲ Cone	Chaser Vehicle
⚡ Sign	Vehicle Mounted Rear Crash Attenuator
⚡ Traffic Control Person	
Work Activity Area	350P Flashing Light
Work Truck	Portable Traffic Signal
Shadow Vehicle	Baricade and Fencing
Shadow Vehicle #1	Flashing Arrow Board (FAB)
Shadow Vehicle #2	Flashing Arrow Board (FAB) in caution mode
Buffer Vehicle	Dynamic Message Sign (DMS)

**BC ONE CALL**

CALL BEFORE YOU DIG  
1 800-474-4886  
VANCOUVER AREA  
604-267-1810



CONSTRUCTION	PERMIT	ISSUE ON	REV. ON	THE OTHER PROVISIONS ON THIS PLAN SHALL APPLY TO ALL THE REMAINING PROPERTIES OF THIS
REV. DESCRIPTION	ISSUED DATE	626231812	SCALE: NTS	PROPOSED TRAFFIC CONTROL LAYOUT, TO ACCOMMODATE TELECOM CABLE PLACING AND SPLICING
REV. DESCRIPTION	REV. DATE		DATE: 08/07	
REV. DESCRIPTION	REV. DATE		ASSOCIATED EXPENSES	ALONG NIXON ROAD IN CHILLIWACK
REV. DESCRIPTION	APPROVED DATE			
REV. DESCRIPTION	DATE			SYSTEM NAME: 265596
REV. DESCRIPTION	AS NOTIFIED DATE			SHEET 3
REV. DESCRIPTION	CONTRACTOR			





TABLE A - TAPER LENGTHS										
Taper Types (m)	Regulatory Speed Limit before Work Begins (km/h)									
	≤ 50	60	70	80	90	100	110	120		
Merge Taper Length	1/4	35	55	160	190	210	230	250	280	
Lane Shift Taper Length	1/4	30	50	80	100	110	120	130	140	
Downstream Taper Length	1/4	30	30	30	30	30	30	30	30	
TCP, Signal, and Shoulder Taper Length (min. 5 devices)	1/4	5	8	15	15	15	15	15	15	
Minimum Tangent Length between Tapers	1/4	30	60	160	190	210	230	250	280	
Run-in Length on Centreline	1/4	40	50	60	60	70	80	90	100	

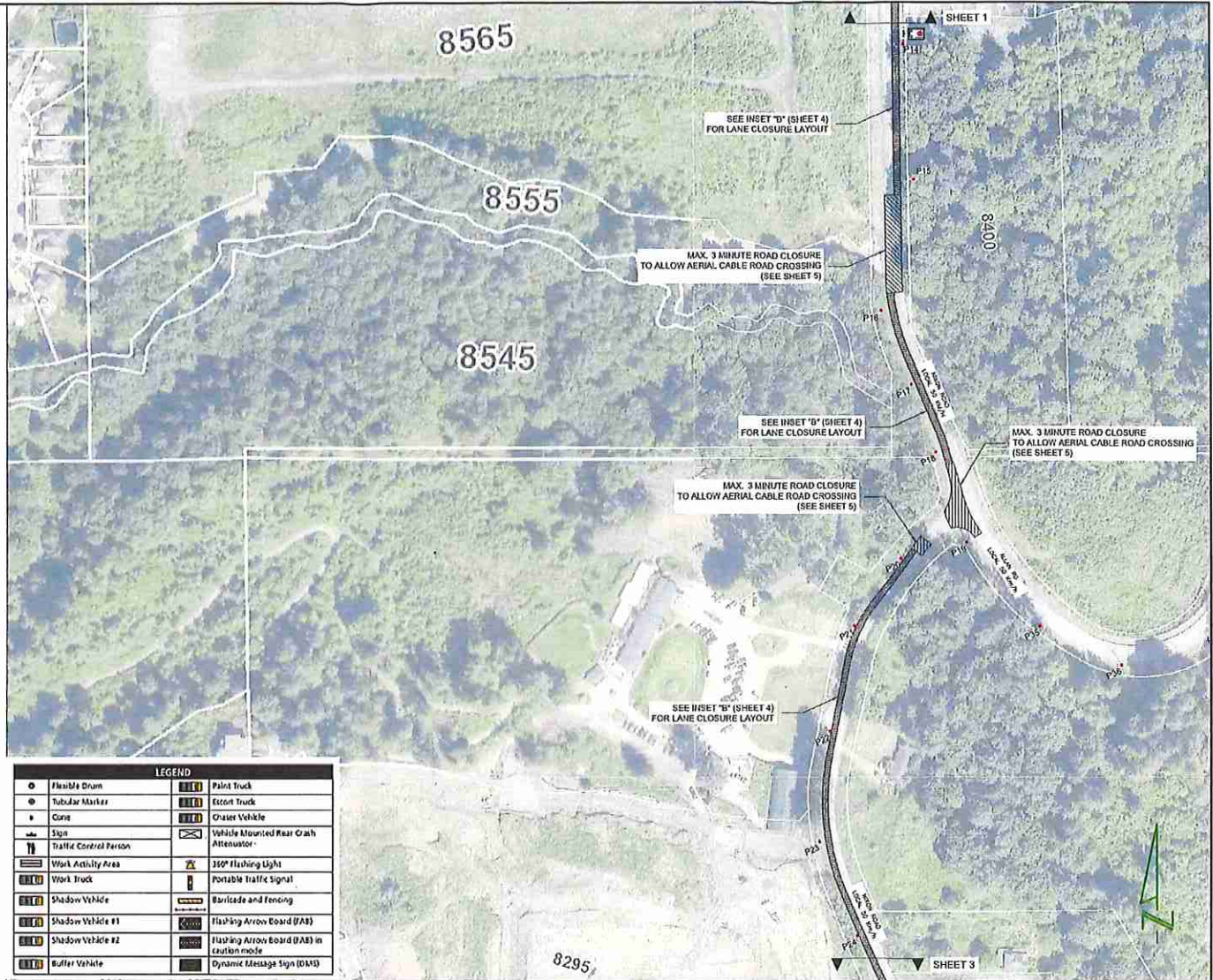
TABLE B - DEVICE SPACING LENGTHS										
Device Spacing (m)	Regulatory Speed Limit before Work Begins (km/h)									
	≤ 50	60	70	80	90	100	110	120		
Construction Sign Spacing	A	40	60	80	100	150	150	200	200	
Buffer Space	B	30	40	60	80	110	140	170	200	
Channelizing Device Spacing for Tapers	C	10	10	15	15	15	15	15	15	
Channelizing Device Spacing on Curves and Tangents	D	10	10	30	30	40	40	40	50	

**NOTES:**

1. THE WORK REQUIRING THE TRAFFIC CONTROL MEASURE INVOLVES THE PLACING AND SPLICING OF FIBER OPTIC CABLE AT P14, P15, P16, P17, P18, P19, P20, P21, P22, P23, AND P24 LOCATED ON THE SIDE OF NIXON ROAD IN CHILLIWACK. THE DURATION OF USE OF THIS MEASURE WILL BE UNTIL THE WORK IS COMPLETED.
2. LANE CLOSURES ARE AS NOTED IN THIS LAYOUT.
3. TIMING OF THE WORKS WILL BE FROM 9:00AM TO 3:00 PM.
4. LOCATION OF THE WORK ZONE IS AS INDICATED ON THIS PLAN FOR CONSTRUCTION.
5. THE MEASURES SHOWN IN THIS TRAFFIC MANAGEMENT PLAN IS IN ACCORDANCE TO THE "BC TRAFFIC MANAGEMENT MANUAL FOR WORK ON ROADWAYS (2015 INTERIM)". CHANGES TO THIS LAYOUT MAY BE MADE BY THE TRAFFIC CONTROL PERSON IN CHARGE TO REFLECT FIELD CONDITIONS.
6. ALL AERIAL ROAD CROSSINGS REQUIRE TEMPORARY ROAD CLOSURE FOR MAXIMUM 3 MINUTES (REFER TO FIGURES ON SHEET 5).
7. PRIORITY ACCESS WILL BE GIVEN TO EMERGENCY VEHICLES.
8. ALL DIMENSIONS ARE IN METRES.

**CONTACT INFORMATION:**

ALEC LUNDE:  
C: 778-837-4642



LEGEND		
○	Flexible Drum	Paint Truck
○	Tubular Marker	Escort Truck
■	Cone	Chaser Vehicle
▲	Sign	Vehicle Mounted Rear Crash Attenuator
⊠	Traffic Control Person	
▭	Work Activity Area	300' Flashing Light
▭	Work Truck	Portable Traffic Signal
▭	Shadow Vehicle	Barricade and Fencing
▭	Shadow Vehicle #1	Flashing Arrow Board (FAB)
▭	Shadow Vehicle #2	Flashing Arrow Board (FAB) in caution mode
▭	Buffer Vehicle	Dynamic Message Sign (DMS)



**BC ONE CALL**

CALL BEFORE YOU DIG  
1-800-474-4499  
VANCOUVER AREA  
604-277-1819



CONSTRUCTION	PERMIT	DESIGN ID	DATE
REV. DESCRIPTION	ISSUED DATE	REV. DESCRIPTION	DATE
REV. DESCRIPTION	REV. DATE	ASSOCIATED DRAWINGS	
REV. DESCRIPTION	REV. DATE	1.	
REV. DESCRIPTION	DATE	2.	
REV. DESCRIPTION	AS CONSTRUCTED DATE	3.	
REV. DESCRIPTION	CONTRACTOR	REP.	

PROPOSED TRAFFIC CONTROL LAYOUT TO ACCOMMODATE TELECOM CABLE PLACING AND SPLICING		SYSTEM NAME:
ALONG NIXON ROAD IN CHILLIWACK		283838
		SHEET 2



TABLE A - TAPER LENGTHS									
Taper Types (m)	Regulatory Speed Limit before Work Begins (km/h)								
	≤ 50	60	70	80	90	100	110	120	
Merge Taper Length	35	55	160	150	210	230	250	280	
Lane Shift Taper Length	30	50	80	100	110	120	130	140	
Downstream Taper Length	30	30	30	30	30	30	30	30	
TCP Sign, and Shoulder Taper Length (min. 5 devices)	5	8	15	15	15	15	15	15	
Minimum Tangent Length between Tapers	30	60	160	190	210	230	250	280	
Run-in Length on Centreline	40	50	60	60	70	80	90	100	

TABLE B - DEVICE SPACING LENGTHS									
Device Spacing (m)	Regulatory Speed Limit before Work Begins (km/h)								
	≤ 50	60	70	80	90	100	110	120	
Construction Sign Spacing	A	40	60	80	100	150	150	200	200
Buffer Space	B	30	40	60	60	110	140	170	200
Channelizing Device Spacing for Tapers	C	10	10	15	15	15	15	15	15
Channelizing Device Spacing on Curves and Tangents	D	10	10	30	30	40	40	40	50

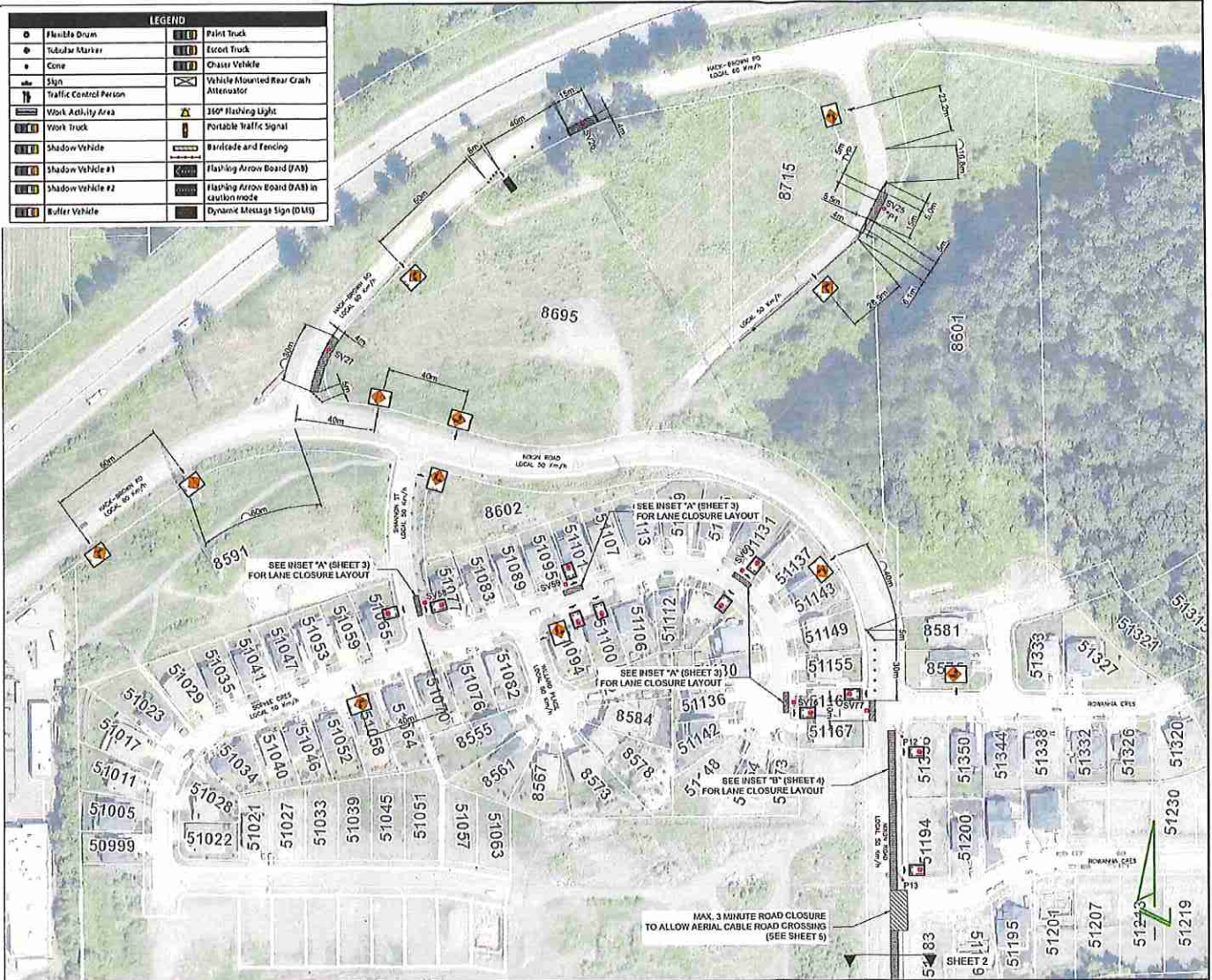
**NOTES:**

1. THE WORK REQUIRING THE TRAFFIC CONTROL MEASURE INVOLVES THE PLACING AND SPLICING OF FIBER OPTIC CABLE AT SV 25, SV26, SV27, SV58, SV59, SV60, SV76, SV77, P12 AND P13 LOCATED ON THE SIDE OF HACK-BROWN ROAD, SHANNON ST, SOPHIE CRES, NIXON ROAD IN CHILLIWACK. THE DURATION OF USE OF THIS MEASURE WILL BE UNTIL THE WORK IS COMPLETED.
2. LANE CLOSURES ARE AS NOTED IN THIS LAYOUT.
3. TIMING OF THE WORKS WILL BE FROM 9:00AM TO 3:00 PM.
4. LOCATION OF THE WORK ZONE IS AS INDICATED ON THIS PLAN FOR CONSTRUCTION.
5. THE MEASURES SHOWN IN THIS TRAFFIC MANAGEMENT PLAN IS IN ACCORDANCE TO THE "BC TRAFFIC MANAGEMENT MANUAL FOR WORK ON ROADWAYS (2015 INTERIM)". CHANGES TO THIS LAYOUT MAY BE MADE BY THE TRAFFIC CONTROL PERSON IN CHARGE TO REFLECT FIELD CONDITIONS.
6. ALL AERIAL ROAD CROSSINGS REQUIRE TEMPORARY ROAD CLOSURE FOR MAXIMUM 3 MINUTES (REFER TO FIGURES ON SHEET 5).
7. PRIORITY ACCESS WILL BE GIVEN TO EMERGENCY VEHICLES.
8. ALL DIMENSIONS ARE IN METRES.

**CONTACT INFORMATION:**

ALEC LUNDE:  
C: 778-837-4642

LEGEND			
	Flexible Drum		Paint Truck
	Tubular Marker		Escort Truck
	Cone		Chaser Vehicle
	Sign		White Mounted Rear Crash Attenuator
	Traffic Control Person		360° Flashing Light
	Work Activity Area		Portable Traffic Signal
	Work Truck		Barricade and Fencing
	Shadow Vehicle		Flashing Arrow Board (FAB)
	Shadow Vehicle #1		Flashing Arrow Board (FAB) in caution mode
	Shadow Vehicle #2		Dynamic Message Sign (DMS)
	Buffer Vehicle		



	<b>BC ONE CALL</b> CALL BEFORE YOU DIG 1-800-474-8888 VANCOUVER AREA 604-271-1510		CONSTRUCTION REV. DESCRIPTION REV. DESCRIPTION REV. DESCRIPTION REV. DESCRIPTION REV. DESCRIPTION REV. DESCRIPTION	PDS#1 SUBMITTED DATE: REVISED DATE: RE-REV DATE: APPROVED DATE: DATE: AS CONSTRUCTED DATE: CONTRACTOR:	DESIGN (S) SCALE: 1:1 DATE: 08/27/12 ASSOCIATED DRAWINGS: 1. 2. 3. REF:	EIR: EAM SCALE: 1:1 DATE: 08/27/12	THE WORKS SHOWN ON THIS DRAWING SHALL AT ALL TIMES REMAIN THE PROPERTY OF TELUS <b>PROPOSED TRAFFIC CONTROL LAYOUT TO ACCOMMODATE TELECOM CABLE PLACING AND SPLICING</b> THE SIDE OF HACK-BROWN ROAD, SHANNON ST, SOPHIE CRES, NIXON ROAD IN CHILLIWACK.	SYSTEM NAME: 2538356 <b>SHEET 1</b>
--	---	--	--	---	--	--	--	---